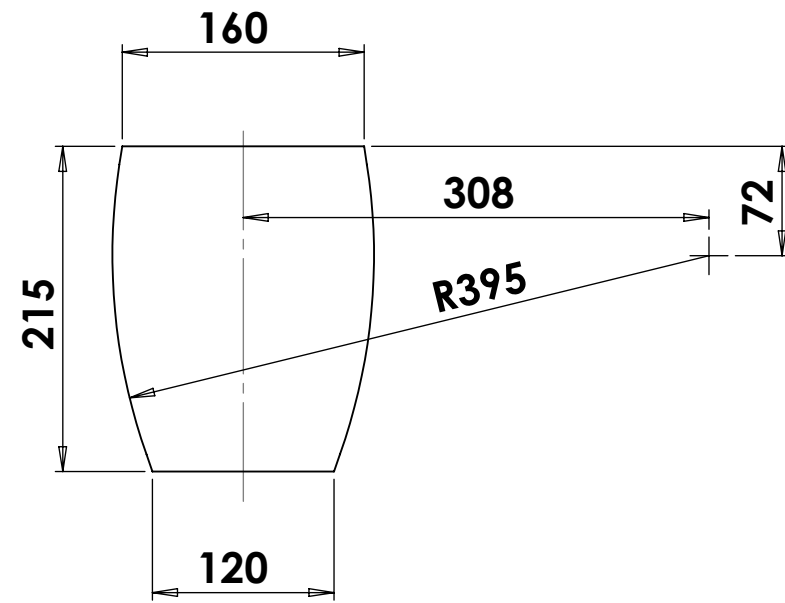
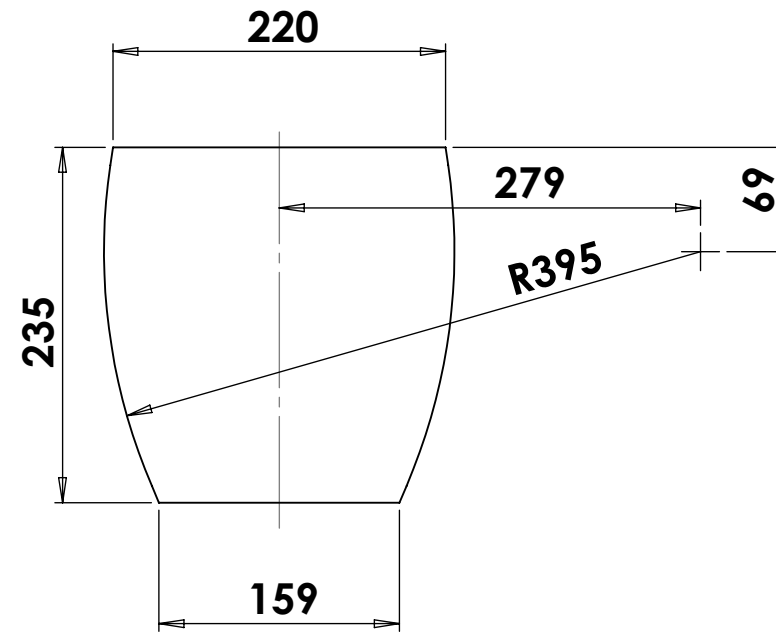


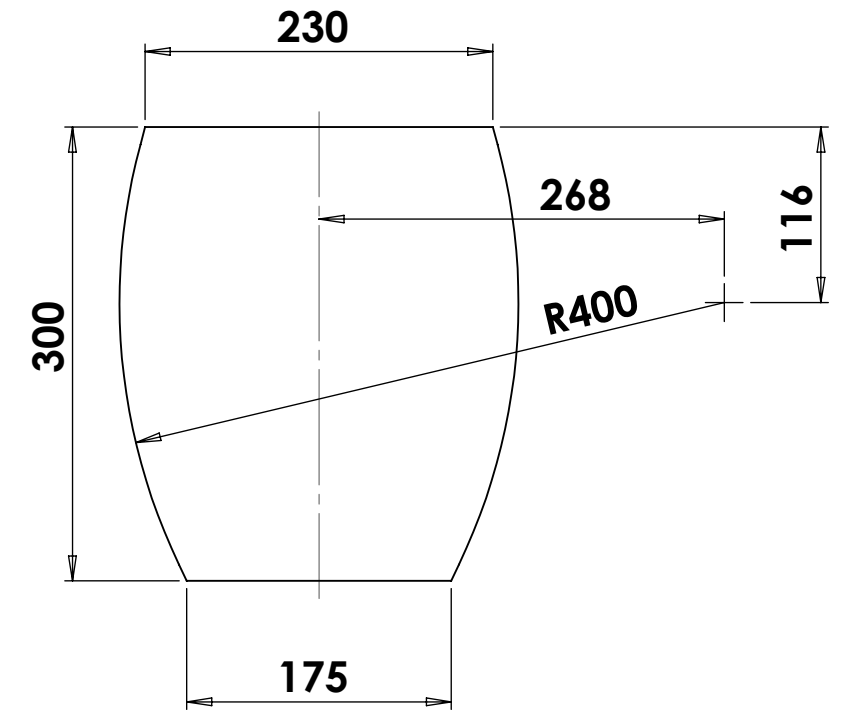
CABINET BASE DIMENSIONS - HIFI SERIES



SCM 7




SCM 11



SCM 19

1. REMOVE ALL BURRS & SHARP EDGES (BREAK ALL EDGES - MAX 0.2 RAD)
2. PLEASE PACK & HANDLE TO AVOID ANY DENTS, BRUISING & SCRATCHES
3. THIS IS A COSMETIC PART
4. THERE MUST BE NO VISIBLE MACHINING MARKS

REV	DATE	DRAWN	CHK'D	APPV'D	MODIFICATION
*	00-00-00	***	***	***	***
A	30-06-14	MAWBY	***	***	NEW DRAWING - SOLIDWORKS

 LOUDSPEAKER TECHNOLOGY LTD GYPSY LANE ASTON DOWN STROUD GLOUCESTERSHIRE GL6 8HR TELEPHONE: 01285 760561 www.atc.gb.net	MATERIAL:	PROJECT INSTALLATION INFORMATION	
	FINISH:	DWG NO. CBS01revA	REV A
©LOUDSPEAKER TECHNOLOGY LTD 2014 ALL RIGHTS RESERVED. This form and any attachments to it, may not be reproduced or transmitted, in any form or by any means, or stored in any system, without the prior written consent of Loudspeaker Technology Ltd, and if requested, must be immediately returned to Loudspeaker Technology Ltd.	TITLE CABINET BASE SILHOUETTES - HIFI ACTIVE		
TOLERANCES UNLESS OTHERWISE STATED MACHINED DIMENSIONS: ONE DECIMAL PLACE: +/- 0.25MM TWO DECIMAL PLACES: +/- 0.10MM ANGULAR: +/- 0.50DEG		SHEET METAL DIMENSIONS: INTERNAL EXTERNAL UNDER 15 : +0.20 -0.20 15 TO 100 : +0.35 -0.35 OVER 100 : +0.50 -0.50	
THIRD ANGLE PROJECTION		WEIGHT SCALE 1:5	PAPER A3
ALL DIMENSIONS IN MILLIMETRES U.O.S. - REMOVE SHARP EDGES		SHEET 1 OF 1	